

KEY WEST HARBOR

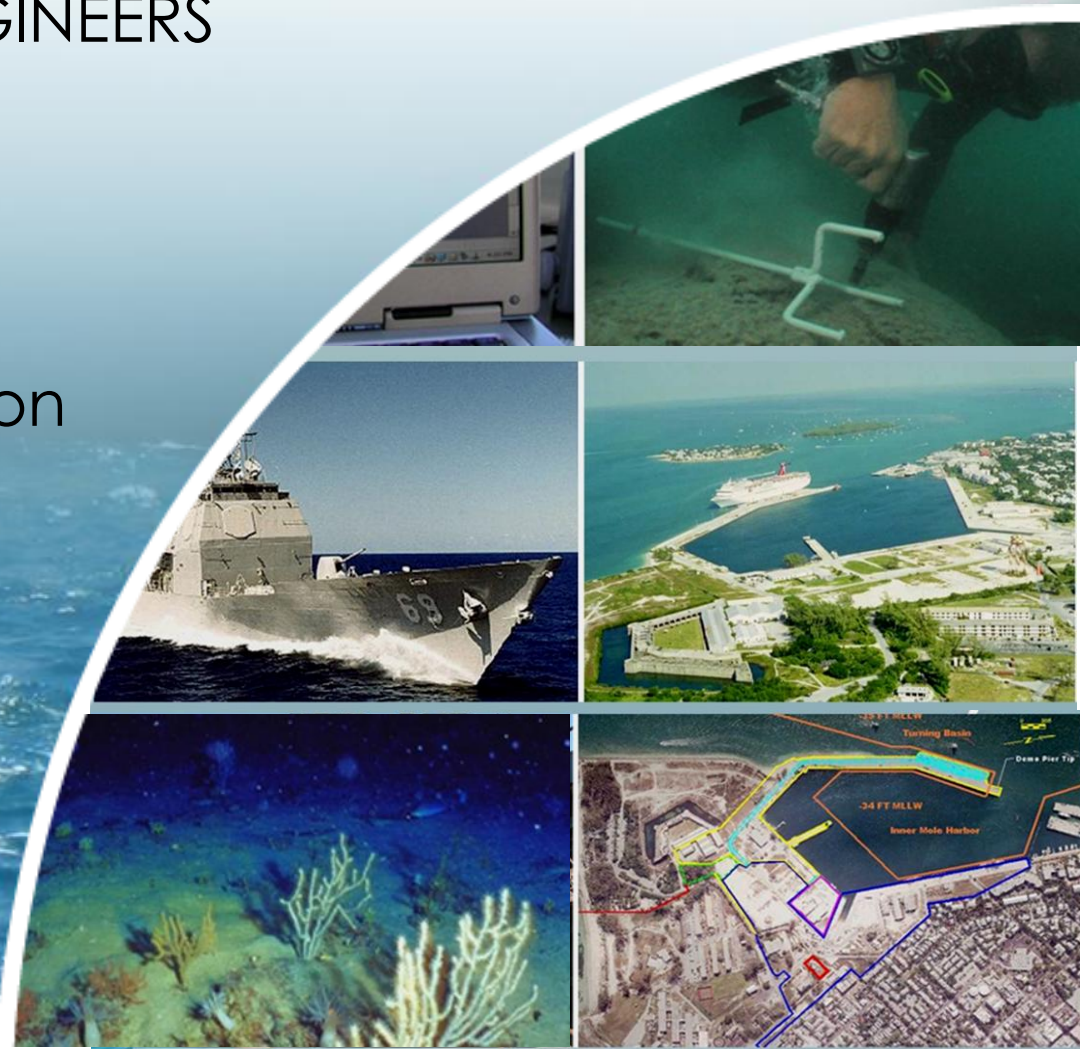
U.S. ARMY CORPS OF ENGINEERS

August 22, 2013

Eric Bush, Chief
Planning and Policy Division

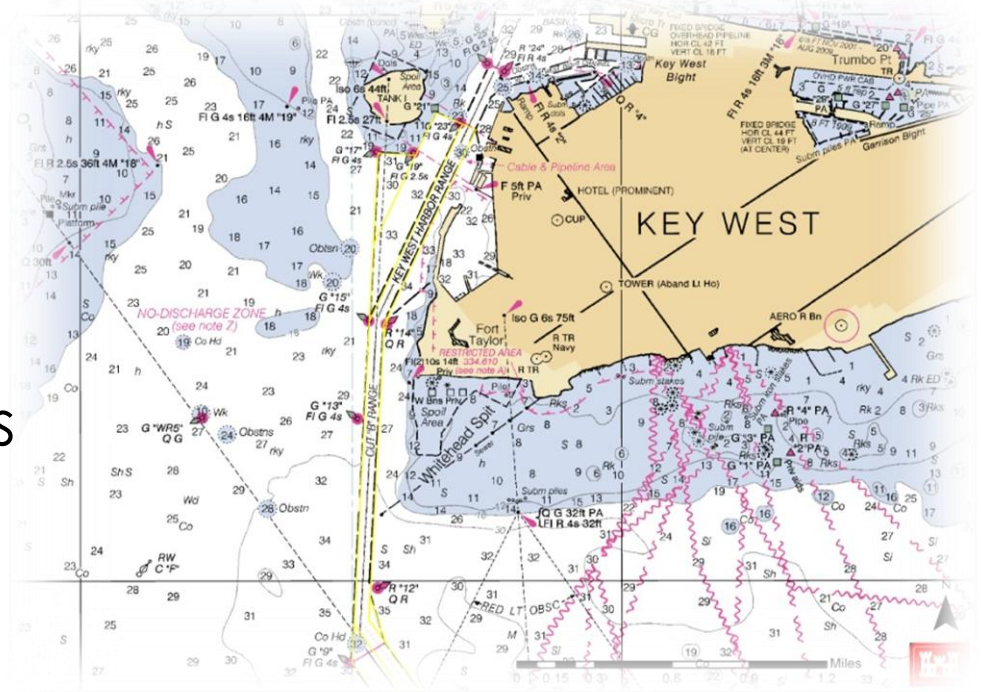


US Army Corps
of Engineers®
Jacksonville District



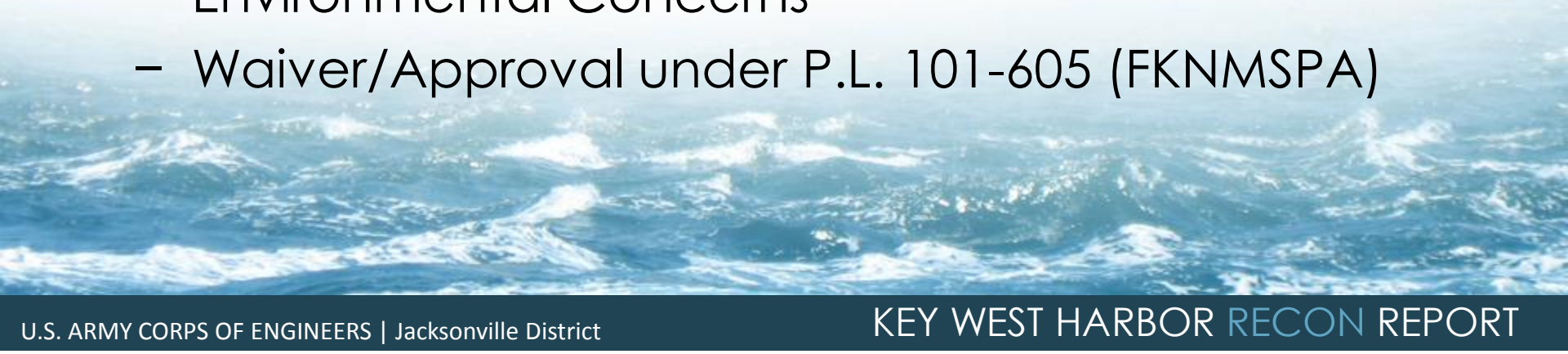
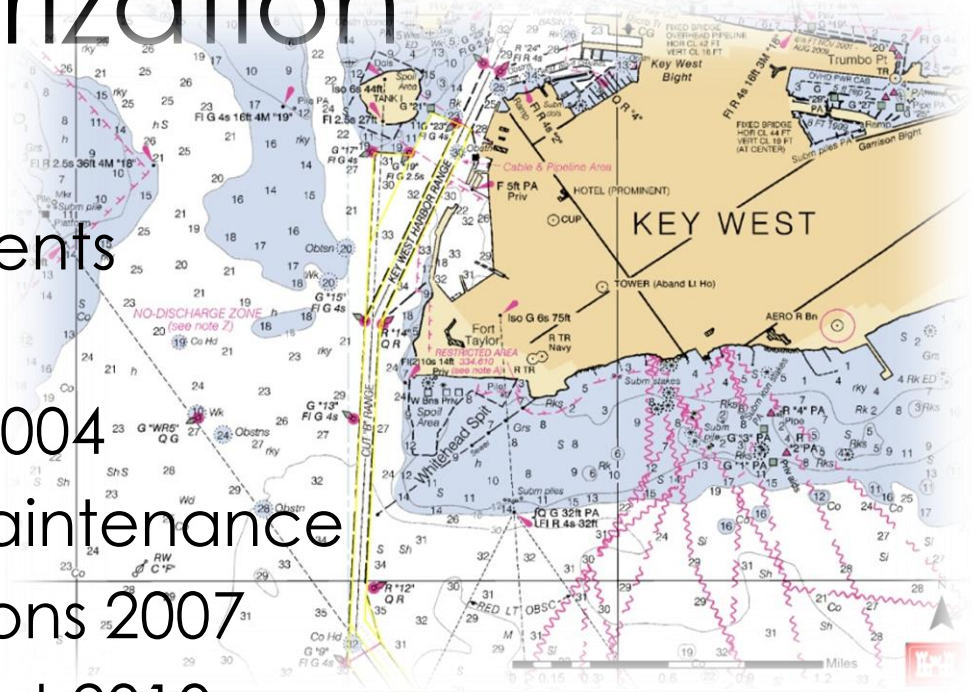
Overview

- History, Authorization
- The Civil Works Process
- Feasibility Study
- Next Steps



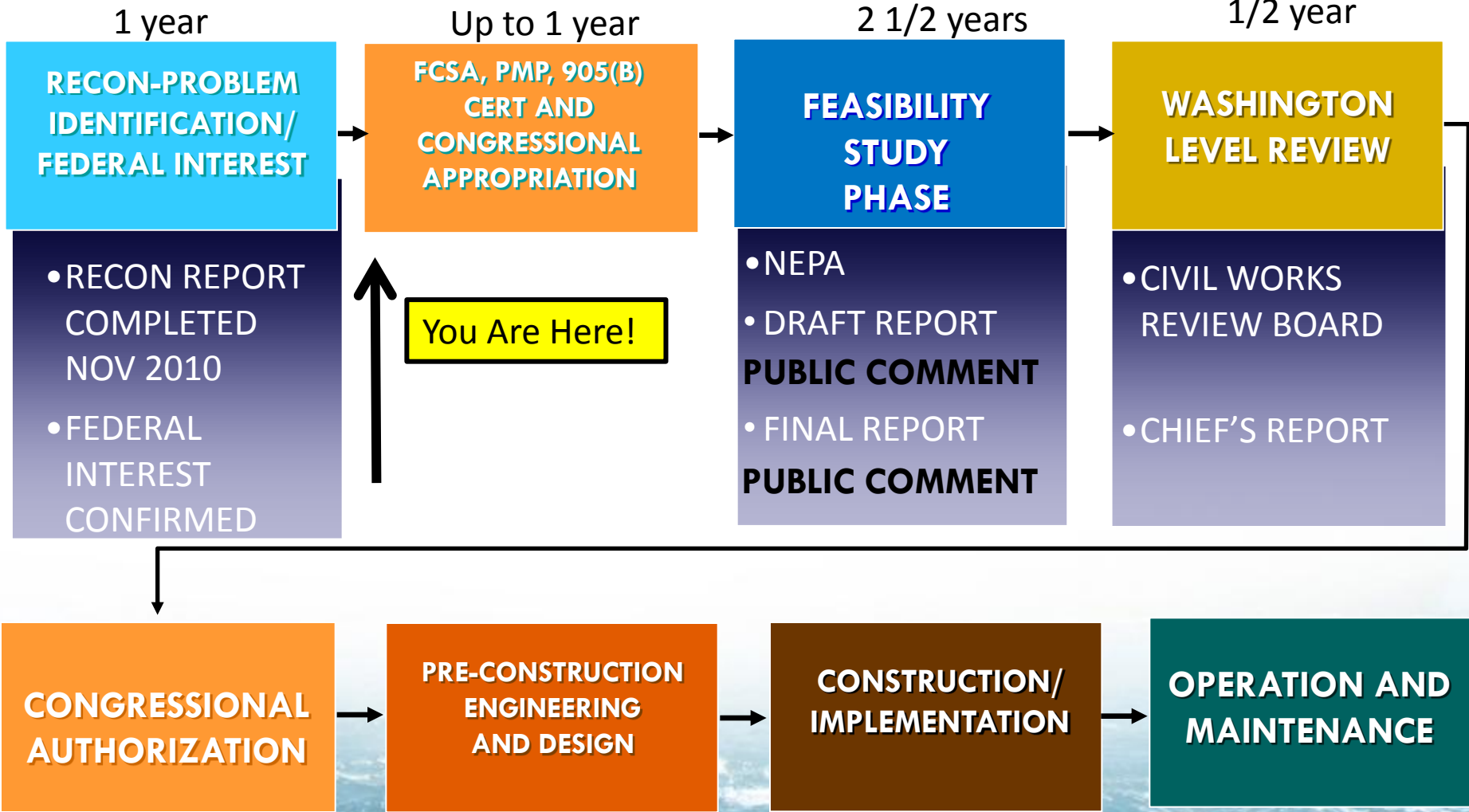
History, Authorization

- Navigation Improvements
 - Authorized 1962
- Navy Dredging 2003-2004
 - 34 ft + advance maintenance
- Investigate Modifications 2007
- Reconnaissance Report 2010
 - Net Economic Benefits
 - Environmental Concerns
 - Waiver/Approval under P.L. 101-605 (FKNMSPA)



Civil Works Process

USACE Civil Works Transformation



General Feasibility Study Steps

- ✓ 1. Identification of a Local Non-Federal sponsor.
- ✓ 2. Congressional Authorization to proceed with Study (House Docket 2777, May 2007).
3. Congressional Appropriations (Federal funds) to commence study (typically specified in the fiscal year's budget bill passed by both the house and the senate).
4. Non-Federal share of funds (or agreement for WIK) to commence study provided to the USACE.
5. USACE conducts Feasibility Study.

Feasibility Study Scope

Economics

- Conduct detailed analysis on cargo and cruise traffic to calculate transportation cost savings over 50 years. Identify plan that maximizes net benefit.

Environmental

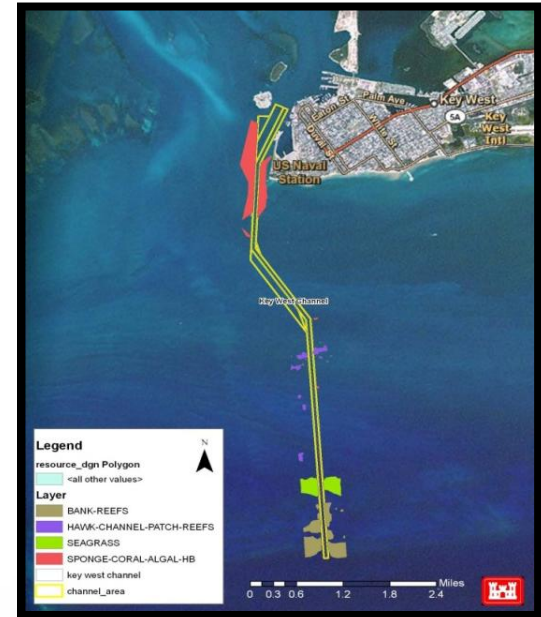
- Assessment of effects on: coral reefs, threatened and endangered species, protected marine mammals, essential fish habitat, migratory birds. Coordinate alternatives with agencies for channel, offshore disposal areas, mitigation.

Engineering

- Conduct ship simulation with design vessel(s) to determine channel widths and alignments. Identify costs.

Reason for the study : Problem Identification

- Insufficient Channel widths.
- Difficult and unpredictable cross currents, winds and waves cause crabbing into the channel.
- Transit safety and environmental risks- natural resource proximities.
- Loss of economic growth (as larger cruise ships cannot access Port)



What's Next?

- Coordination w NOAA/NMFS and other partners
- Budget Request/Appropriation to USACE to develop Study Cost-Sharing Agreement
 - USACE HQ Approval
 - Study Scope, Cost, Schedule
- Study Agreement Executed by Army and City of Key West
 - Non-Fed Funds/Work In-Kind
- Initiation of Study
 - USACE Policy: Three years, \$3 Million
 - Waiver required if exceeds three years/\$3M